



MONTHLY MEMBERSHIP PROGRESS REPORT

District 1 A

Results as of: 5/31/2015

GMT: THOMAS MATNEY

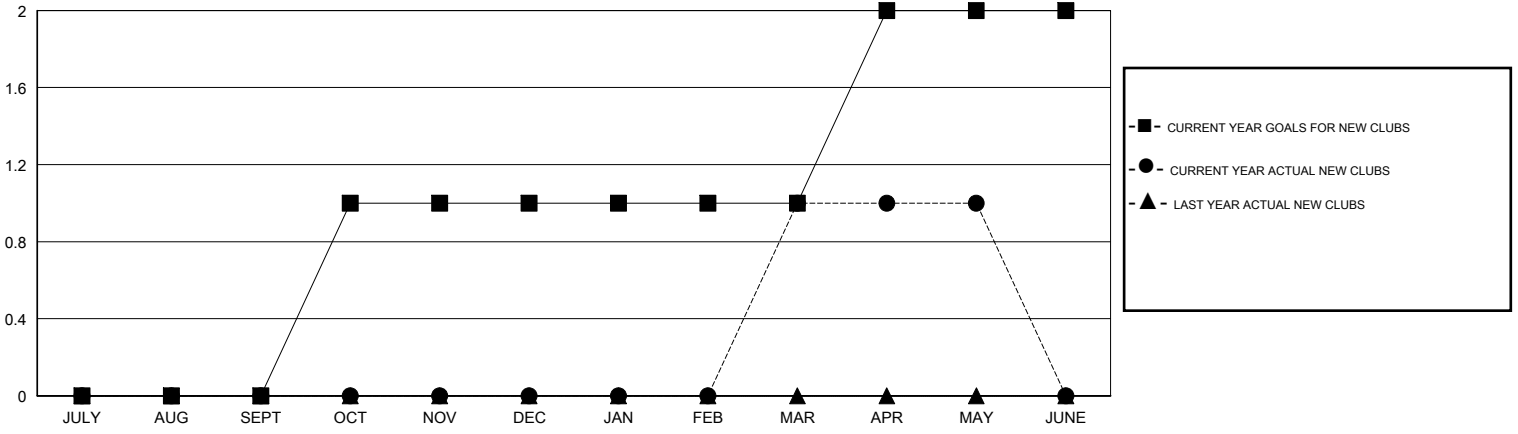
LOCATION ILLINOIS

GMT CA 1

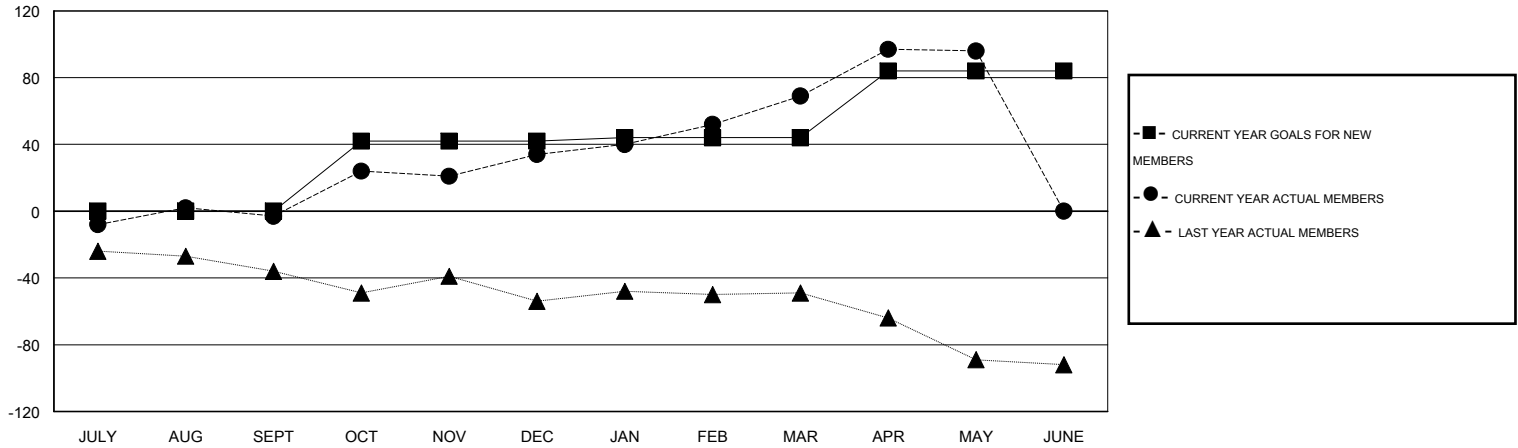
Clubs				
RESULTS FOR 2014-2015				
QUARTER	NEW CLUB GOAL	NEW CLUBS	DROPPED CLUBS	NET GAIN/LOSS
JULY/AUG/SEPT	0	0	0	0
OCT/NOV/DEC	1	0	0	0
JAN/FEB/MAR	0	1	0	1
APR/MAY/JUNE	1	0	0	0

Members				
RESULTS FOR 2014-2015				
QUARTER	NEW MEMBER GOAL	CHARTER AND NEW MEMBERS ADDED	DROPPED MEMBERS	NET GAIN/LOSS
JULY/AUG/SEPT	0	37	40	-3
OCT/NOV/DEC	42	82	45	37
JAN/FEB/MAR	2	56	21	35
APR/MAY/JUNE	40	51	24	27

GOALS AND ACTUAL NEW CLUBS CUMULATIVE



GOALS AND ACTUAL MEMBERS CUMULATIVE



DROPPED CLUBS: 0

47 CLUBS OF 72 ADDED 1 OR MORE NEW MEMBERS

GENDER DISTRIBUTION	
MALE	1,258 (68.59%)
FEMALE	576 (31.41%)

DROPPED MEMBERS	
DECEASED	21
CLUB CANCELLED	0
OTHER	109
TOTAL	130

[CLICK HERE FOR HEALTH ASSESSMENT DATA](#)

FAMILY UNIT MEMBERS	417
HEAD OF HOUSEHOLD	194
NON-HEAD OF HOUSEHOLD	223